



Best Values in the Market Today

3 Month Corporate Cert @ 4.33%
 6 Month Corporate Cert @ 4.25%
 9 Month Corporate Cert @ 4.13%
 1 Year Corporate Cert @ 4.02%
 2 Year Corporate Cert @ 3.92%
 3 Year Corporate Cert @ 3.89%

Market Watch - 3/11/2025

Investment Rates

Premier Investment Suite	>50,000,000	>10,000,000	>5,000,000	<5,000,000	Settlement
Prior Day's Rate	4.20	4.18	4.16	4.14	3.70
Prior Month Average	4.20	4.18	4.16	4.14	3.70

Plateau Rates	>5,000,000	>2,500,000	>1,000,000	<1,000,000
Prior Day's Rate	4.15	4.12	4.09	4.06
Prior Month Average	4.15	4.12	4.09	4.06

Money Market Account	>30,000,000	>10,000,000	>5,000,000	>2,500,000	<2,500,000
Prior Day's Rate	4.36	4.36	4.36	4.36	4.36
Prior Month Average	4.36	4.36	4.36	4.36	4.36

PLUS Account		Variable Account	
\$500,000 Minimum - 4 Withdrawals/Month	4.30	\$1,000 Minimum - 30 Day Notice	4.38
Prior Month Average	4.30	Prior Month Average	4.38

Certificate Rates			FLEX Investment Account	
Term	Monthly Pay Rate	A.P.Y.	\$500,000 Minimum-Transfers on Tuesdays Only	
1 Month	4.31	4.392	Prior Month Average	
2 Month	4.32	4.402	February NCA Indication Rate	
3 Month	4.33	4.413	February PCC Indication Rate	
4 Month	4.32	4.402	January NCA Indication Rate	
5 Month	4.27	4.358	January PCC Indication Rate	
6 Month	4.25	4.337	December NCA Rate	
7 Month	4.20	4.285	December PCC Rate	
8 Month	4.17	4.254		
9 Month	4.13	4.212		
			1 Million - 5 Million	Over 5 Million
Term	Rate	A.P.Y.	Rate	A.P.Y.
1 Year	4.02	4.095	4.02	4.095
13 Month	4.01	4.050	4.01	4.050
18 Month	3.96	3.994	3.96	3.994
2 Year	3.92	3.953	3.92	3.953
3 Year	3.89	3.930	3.89	3.930
4 Year	3.91	3.947	3.91	3.947
5 Year	3.91	3.947	3.91	3.947


Since all certificates 1-year and less pay interest monthly, and all certificates longer than 1-year pay interest semi-annually, effective yields may be significantly higher than the quoted nominal rate. Rates for amounts less than \$100k by request.

Structured Products

Fixed Callable 9606 - 2.00yr NC 6 months							
Closing*	Settle Date	First Call	Callable	Maturity	Spread	Rate	
3/17/2025	3/17/2025	9/15/2025	Semi-Annual	3/15/2027	2yr T + 10 bps	4.00%	
Fixed Callable 9607 - 3.00yr NC 3 months							
Closing*	Settle Date	First Call	Callable	Maturity	Spread	Rate	
3/17/2025	3/17/2025	3/16/2025	Quarterly	3/15/2028	3yr T + 10 bps	4.00%	
Fixed Callable 9608 - 4.00yr NC 3 months							
Closing*	Settle Date	First Call	Callable	Maturity	Spread	Rate	
3/17/2025	3/17/2025	3/16/2025	Quarterly	3/15/2029	4yr T + 10 bps	4.06%	
Fixed Callable 9609 - 5.00yr NC 3 months							
Closing*	Settle Date	First Call	Callable	Maturity	Spread	Rate	
3/17/2025	3/17/2025	3/16/2025	Quarterly	3/15/2030	5yr T + 10 bps	4.08%	

*Structured Products close at 11:00am CT on the closing dates listed

Liquidity Rates

Premier Loan		Managed Loan	Prior Month Average		Automatic Loan	**Floating Rate Term Loans**	
Full Members		4.60	4.60		5.10	2 Year Floating Rate Term Loan Resets Monthly on the 25th - O/R	
Settlement Loan		Prior Month Average		Variable Rate Demand Loan - Tuesdays*		2 Year Floating Rate Term Loan	
Full Members		4.80		Updated: 03/11/2025 \$1,000,000 min 4.750		Resets with Prime - O/R 2 Year Floating Rate Term Loan Resets Quarterly on the 25th - O/R	
Associate Member Settlement Loan			5.05				
Fixed Rate Term Loans*							
Term	\$20 Million+	\$10 Million+	< \$10 Million		 <p>Corporate Central fixed-rate term loans are on an Act/365 basis. FLEX loans are on an Act/360 basis. Posted rate has been converted to Act/365 for comparison purposes. Additional terms & structures are available; please call to discuss which loan will best suit your needs. Rates posted are full member rates unless otherwise noted.</p>		
1 Month	4.70	4.70	4.70				
2 Month	4.72	4.72	4.72				
3 Month	4.73	4.73	4.73				
4 Month	4.74	4.74	4.74				
5 Month	4.71	4.71	4.71				
6 Month	4.70	4.70	4.70				
9 Month	4.68	4.68	4.68				
1 Year	4.61	4.61	4.61				
2 Year	4.67	4.67	4.67				
3 Year	N/A	N/A	N/A				
4 Year	N/A	N/A	N/A				
5 Year	N/A	N/A	N/A				

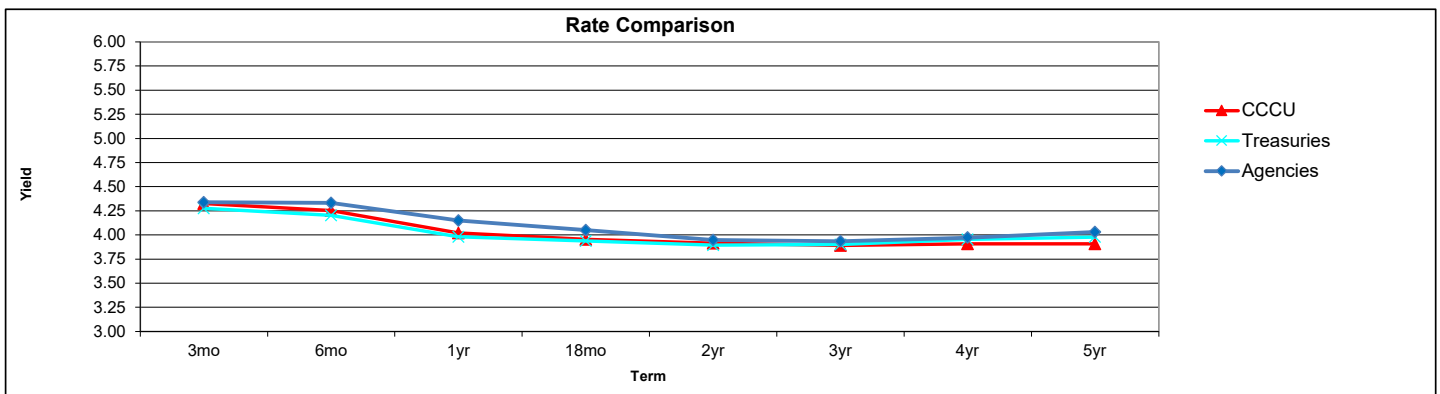
Loan rates for Tier 2 credit will be priced at posted level plus 50 basis points

Economic News

(Bloomberg) 03/11/2025 - US stocks are set for a bounce from Monday's losses, with investors looking ahead to President Donald Trump's meeting with business executives for direction. Nasdaq 100 futures rose 0.4% after the index tumbled almost 4% yesterday, its deepest slump since 2022. S&P 500 contracts climbed 0.3%. Tech shares were moderately higher, with Tesla Inc. adding about 2.4% in the premarket. Bitcoin rose after a five-day losing streak. Trump's meeting with the Washington-based Business Roundtable will include chief executives from around the country, including the bosses of Wall Street lenders. Given the increasingly uncertain outlook for the US economy and trade war concerns, investors will watch for any signals from Trump on the likelihood of tariff-policy shifts or support for equity markets. Treasuries steadied, with 10-year yields rising about three basis points as traders looked forward to a fresh snapshot of the US labor market. January's report on job openings and labor turnover is expected to show hints of cooling though the total number of jobs is seen largely unchanged. The latest corporate results hinted at a slowdown in earnings, with Delta Air Lines Inc. and American Airlines Group Inc. falling in premarket trading after they cut their profit forecasts. Recent US equity weakness, particularly in the tech sector, has been accompanied by a shift in investor perceptions on Europe and China, especially after Germany's pledge to embark on large-scale defense spending. Europe's Stoxx 600 index slipped 0.6% on Tuesday but has outperformed Wall Street year-to-date.

Market Indicators

Fed Funds Effective		4.33	Secured Overnight Financing Rate (SOFR)	4.33000
Fed Funds Target	12/19/24	4.25	30-Day Average SOFR	4.35101
Discount Rate	12/19/24	4.50	90-Day Average SOFR	4.38993
Prime Rate	12/19/24	7.50	180-Day Average SOFR	4.62968
M1 Change \$BLN		22.00	CME Term SOFR 1 Month	4.32537
M2 Change \$BLN		12.10	CME Term SOFR 3 Month	4.29875
S&P 7 Day Taxable Money Fund		2.26	CME Term SOFR 6 Month	4.18496
1 Yr CMT		3.98	CME Term SOFR 12 Month	3.99367
Treasuries:			Dow Jones IA	41,911.71
	1 Year	3.98	NASDAQ	17468.32
	2 Year	3.90	S&P 500	5614.56
	3 Year	3.90	Oil	66.88
	5 Year	3.98	Gold	2915.52
	10 Year	4.22	Silver	32.550
	30 Year	4.55	Canadian Exchange Rate	1.44
Treasury Bill Auction:				
	90 Day	4.200		
	03/10/25 180 Day	4.075		
	4 Week Avg.	4.159		



Corporate Central Credit Union is NCUA insured for deposits up to \$250,000.
For more information, please contact the Investment Department at (800) 242-4747, or at investments@corpcu.com.

*All rates are indications as of 8:30 am CT and are subject to change without notice.
For more information or to place an order, call (800) 242-4747.